

## Industrial Hemp Value

All hemp products are biodegradable and can be recycled. Hemp production leaves no chemical runoff to pollute waterways. Variety of hemp grown is determined by end product desired.

- Whole stalk— Biomass energy  
Construction material -  
particleboard, door and  
window moldings
- Outer stalk — Composites - boat hulls,  
computer/television  
housing, kitchen counters  
and automobile components  
Plastics - garbage bags, diaper  
liners, food wrap, and  
bottles  
Reinforcement for cement,  
wallboard, and recycled  
paper  
Pulp for paper and boxes  
Fiber for carpets, textiles, and  
insulation
- Inner Core — Cellulosic ethanol  
Animal bedding  
Packing materials
- Hemp Seed — Oil for bio-based diesel fuel and  
for body care products  
Food - salad oil, cereals, and  
health bars  
Animal food - high protein cattle  
and fish food

Significant portions of European autos, including the German-made Mercedes, are made from industrial hemp: dashboards, steering wheels, door-panels, headliners, carpets, upholstery, and exterior moldings.

Petroleum based products can be made using agricultural raw materials. Bio-based products could reduce US demand for oil by 10%.

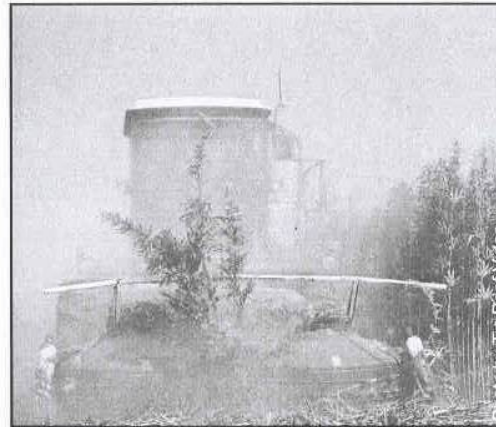
## Industrial Hemp...

Earth-Friendly Crop

For Farmers to Produce

Fiber, Fuel,

Feedstock & Food



*Harvesting Industrial Hemp*

Photo by Tim Roof Video

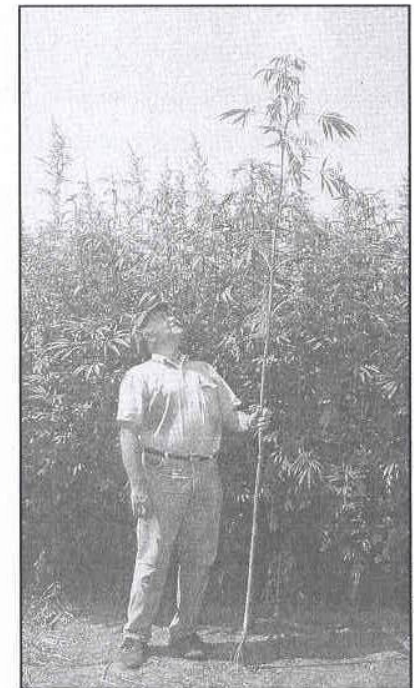
# INDUSTRIAL

— HEMP —

*The Plant*

*The Law*

*& The Solution*



*Canadian Industrial Hemp*

Photo by Geof Kime www.stemergy.com

North American Industrial Hemp Council  
[www.naihc.org](http://www.naihc.org)

## The Plant

Grown with government certified seed

Contains less than 0.3% THC

No narcotic value in seed, stalk or leaf

Grows 10-16 feet high in 4 months

Produces 6-10 tons of bio-mass per acre

Will grow wherever corn grows

Requires no herbicide or pesticide

No residual chemicals left in soil

Ideal rotation crop

Excellent for soil bio-remediation

Seed drilled into earth 6 inches apart

Deep taproot makes plant drought resistant

Harvested into round or square bales

Uses modified existing farm equipment

Outer Stalk — longest, strongest  
natural fiber

Inner Stalk — core 100% cellulose

Seed — produces oil for fuel, food and body  
care products

Seed cake — high in protein and Omega 3

## Legal Issues

- Drug Enforcement Agency (DEA) policy makes industrial hemp illegal.
- Industrial hemp cannot be grown in the United States.
- Industrial hemp is legally grown in Europe, Asia and Canada.
- Two states (ND & VT) have legalized hemp; 24 states have legislation pending.
- Industrial hemp and products (fiber, oil & seed) are imported by US industries.

## Legal Solutions

- Since DEA officials state they do not consider industrial hemp a narcotic, DEA should change the current DEA policy and allow the production of industrial hemp.
- DEA should publicly acknowledge the difference between industrial hemp and marijuana.
- DEA should remove industrial hemp from the DEA Schedule 1 drug list.
- US should permit production of industrial hemp following the NAIHC Growing Protocol:
  - Government approved certified seed planted on GPS designated fields
  - Government inspection at any time
  - Seed issued to qualified farmers only after end-buyers are under contract
  - Growing protocol facilitated through county Farm Service offices

## Legal Arguments

Current DEA policy directly contradicts U.S. Congressional (1937) and Executive (1970) Acts, and contradicts the United Nations Single Convention On Narcotics (1970), all of which explicitly exempt industrial hemp.

Federal Bureau of Narcotics (1945) guaranteed no negative impact on the hemp industry. The DEA evolved from Bureau of Narcotics (1973) with mandates to neither limit nor expand the DEA authority beyond that of the Bureau of Narcotics.

The DEA can correct the current prohibition policy and remove industrial hemp from the DEA Schedule 1 drug list; no congressional legislation is necessary. Industrial hemp has no value as a psychoactive narcotic.

Cross-pollination would help eradicate field and green-house marijuana. Crop identification is simplified for law enforcement by GPS designated fields. County Sheriff Department budgets should be independent of hemp production.

The National Association of State Departments of Agriculture unanimously endorsed the legalization of industrial hemp.

No federal or state court has ever extended the federal definition of marijuana to include legitimate industrial hemp.